



## **PREPARING YOUR ARTISTIC GEL BRUSH**

Proper preparation of your **ARTISTIC GEL BRUSH** ensures a long life of the brush and easy applications of all gels.

1. Remove outer plastic container and brush protector. Throw the small brush protector away.
2. Gently loosen the brush bristles with your fingers to remove packaging starch.
3. Dip your brush into **HARDCORE BUILDING GEL**.
4. Roll the gel off your brush on a clean firm surface (example - inside the lid of your gel) working the gel into the body of the brush. Make sure the brush is completely saturated with gel.
5. Clean excess gel from the brush and shape the brush by wiping on a clean lint free wipe.

## **PROPER CARE OF YOUR ARTISTIC GEL BRUSHES**

1. Keep your **ARTISTIC GEL BRUSH** away from UV Light at all times to prevent gel from hardening in the brush.
2. If you work near a window, store brushes in table away from the sunlight.
3. Gel Brushes can be cleansed with **NAIL SURFACE CLEANSER** but should never be cleaned with acetone or any other solvent.
4. Condition brush with clear gel daily. **DO NOT** allow brush to dry with **NAIL SURFACE CLEANSER** or any solvent in the brush.



## **ROCK HARD NAILS PREPARATION**

1. Sanitize both you and your client's hands. Push back cuticle towards the eponychium and remove any loosened cuticle from the nail plate.
2. Shape the free edge using the 240 grit **EXACT FILE** and lightly buff nail surface with 180 grit **EFFECT BUFFER** to remove shine. Remove dust with a nylon brush.
3. Scrub nail with **NAIL SURFACE CLEANSER**, using a lint free wipe, focusing on the cuticle area and lateral walls.
4. Apply **PH NAIL PREP**.
5. Lightly moisten nail with **OPENING ACT** non-acid based primer. The nail will remain shiny after application.

## **GET BENT NAIL FORM APPLICATION**

1. Remove the form from the paper and Place tab on back for reinforcement.
2. Prepare forms for application by customizing if they do not fit securely under the nail.
3. Roll the form between thumbs while pushing in to start creating a natural c-curve.
4. Apply form to finger ensuring that there are no gaps between the form and the natural nail.
5. Secure the form by matching and sticking the wings together to ensure a perfect c-curve.



## **ROCK HARD LED GEL EXTENSIONS**

### **One Color Sculpture with Brush-on Base**

1. Use **HEADLINER, GROUPIE, OR PINK ROCKER BRUSH-ON GEL**, depending on your client's preference of color. Apply one coat to entire nail surface being careful not touch the skin, and then sealing the free edge. Cure for 30 seconds in your **ARTISTIC PRO30 LED LIGHT** or 2 minutes in a traditional 36watt UV lamp.
2. Apply **GET BENT NAIL FORM**.
3. Use **HARDCORE BUILDING GEL IN CLEAR OR PINK** according to your client preference. With an **ARTISTIC #9 OVAL GEL BRUSH** place a large bead of product on the apex area. Lightly massage the product towards the cuticle and float the brush on top of the bead to extend it out onto the form to the desired length and shape, creating the extension. Flash cure for 10 seconds in your **ARTISTIC PRO30 LED LIGHT** or 30 seconds in a traditional 36watt UV lamp.
4. Gently press in the sidewalls of the nail to create the c-curve. Cure for additional 20 seconds in your **ARTISTIC PRO30 LED LIGHT** or 90 seconds in a traditional 36watt UV lamp.
5. Carefully remove **GET BENT NAIL FORM**. Hold C-curve 5 seconds.



6. Apply another large bead of **HARDCORE BUILDING GEL** to the apex area. Lightly massage the product towards the cuticle and float the brush on top of the bead to fill in low spots to provide strength and structure. Flash cure for 10 seconds in your **ARTISTIC PRO30 LED LIGHT** or 30 seconds in a traditional 36watt UV lamp.
7. Use the appropriate sized **ARTISTIC C-CURVE STICK** under the free edge and gently press in the sidewalls of the nail to create the C-curve. Cure for additional 20 seconds in your **ARTISTIC PRO30 LED LIGHT** or 90 seconds in a traditional 36watt UV lamp.
8. If the nail extension is still flexible, repeat step 6 and 7.
9. Use a lint free wipe soaked in **NAIL SURFACE CLEANSER** to clean the inhibition layer (sticky surface) from the nail. Lay the wipe over the nail and lock in c-curve by gently holding the sidewalls of the nail for 5 seconds.
10. Refine the gel application using the **ROCK HARD NAILS FILING**

## **METHOD.**

### **French Sculpture with HARDCORE Building Gels**

*(Recommended application: Apply to one finger and flash cure. While curing, apply to one finger on the opposite hand and continue alternating).*

- I. Apply **GET BENT NAIL FORM**.



2. Apply a thin layer of **HARDCORE CLEAR BUILDING GEL** using an **ARTISTIC #9 OVAL GEL BRUSH** beginning at cuticle and extending it out onto the form to the desired length and shape creating the extension.
3. Flash cure for 10 seconds in your **ARTISTIC PRO30 LED LIGHT** or 30 seconds in a traditional 36watt UV lamp. Gently press in the sidewalls of the nail to create the C-curve. Cure for additional 20 seconds in your **ARTISTIC PRO30 LED LIGHT** or 90 seconds in a traditional 36watt UV lamp.
4. With an **ARTISTIC #9 OVAL GEL BRUSH** “scoop” a small bead of **HARDCORE PINK BUILDING GEL** onto your brush. Place this bead in the apex area of the nail by rolling your brush toward the smile line. Feather the product toward the cuticle keeping cuticle area thin. Leave the bulk of product at the apex and smile line area. Using a dry lint free wipe, wipe the brush clean and create a U or V shape at the smile line, leaving a ledge of pink so that the white can later lay up against the pink to create the French smile line. Flash cure for 10 seconds in your **ARTISTIC PRO30 LED LIGHT** or 30 seconds in a traditional 36watt UV lamp.
5. Pick up a pea size bead of **HARDCORE WHITE BUILDING GEL**. Place the clean side of the application brush onto the nail form and roll the product onto the center of the nail form where it meets the nail bed (without overlapping on to the pink). With the **ARTISTIC #9 OVAL GEL BRUSH**, gently feather the white builder to the edge of the pink. (Do not overlap). Gently move White to



- the desired length to form the free-edge. Wipe the brush clean and refine the smile line and free edge shape. Flash cure for 10 seconds in your **ARTISTIC PRO30 LED LIGHT** or 30 seconds in a traditional 36watt UV lamp.
6. Apply one coat of **HARDCORE CLEAR BUILDING GEL** like polish to entire nail surface from cuticle to free-edge. **Do not cure.** Then place a medium sized bead at the apex and roll off the brush pulling gel towards the free edge. Leave the bulk of product in the apex location. Gently feather product towards cuticle, sidewalls and free edge, careful not to get gel on skin.
  7. Reinforce application by dipping the brush straight down into the **HARDCORE CLEAR BUILDING GEL**. A string of Gel will extend from the brush after it is raised from the jar. Place the string of gel across the stress area in a zig zag motion for reinforcement. Allow strings of Gel to self-level.
  8. Repeat step 7 until desired shape and structure of nail is achieved. Flash cure for 10 seconds in your **ARTISTIC PRO30 LED LIGHT** or 30 seconds in a traditional 36watt UV lamp. Gently press in the sidewalls of the nail to create the c-curve. Cure for additional 20 seconds in your **ARTISTIC PRO30 LED LIGHT** or 90 seconds in a traditional 36watt UV lamp.
  9. Carefully remove **GET BENT NAIL FORM**. Hold C-curve 5 seconds.
  10. Use a lint free wipe soaked in **NAIL SURFACE CLEANSER** to clean the inhibition layer (sticky surface) from the nail. Lay the wipe over the nail and lock in c-curve by gently holding the sidewalls of the nail for 5 seconds.



11. Refine the gel application using the **ROCK HARD NAILS FILING METHOD**.

## **ROCK HARD LED GEL NATURAL NAIL OVERLAY**

### **One Color Overlay**

1. Use **HEADLINER, GROUPIE, OR PINK ROCKER BRUSH-ON GEL**, depending on your client's preference. Apply one coat to entire surface, careful not to get on skin, sealing the edge closest to the cuticle. Cure for 30 seconds in your **ARTISTIC PRO30 LED LIGHT** or 2 minutes in a traditional 36watt UV lamp.
2. Use **HARDCORE BUILDING GEL IN CLEAR OR PINK** according to your client preference. With an **ARTISTIC #9 OVAL GEL BRUSH** get a large bead of product and place on the apex area. Lightly massage the product towards the cuticle and float the brush on top of the bead to create strength and structure.
3. Flash cure for 10 seconds in your **ARTISTIC PRO30 LED LIGHT** or 30 seconds in a traditional 36watt UV lamp. Gently press in the sidewalls of the nail to create the c-curve. Cure for additional 20 seconds in your **ARTISTIC PRO30 LED LIGHT** or 90 seconds in a traditional 36watt UV lamp.

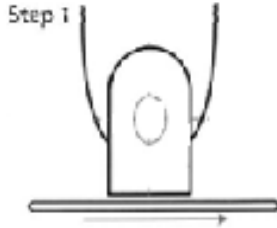
4. If the nail is still flexible, repeat step 2 and 3.
  5. Use a lint free wipe soaked in **NAIL SURFACE CLEANSER** to clean the inhibition layer (sticky surface) from the nail.
  6. Refine the gel application using the **ROCK HARD NAILS FILING METHOD**.
- METHOD.**

## **ROCK HARD NAILS FILING METHOD**

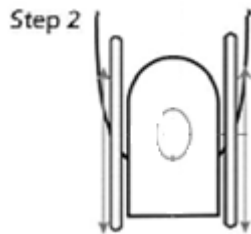
**FILES AND BUFFERS TO USE:** Begin filing on freshly applied product with nothing more course than a 180 grit file if applying gel to the nail enhancement after filing. Do not smooth the nail any further except with a 100 grit buffer when necessary.

### File the Perimeter

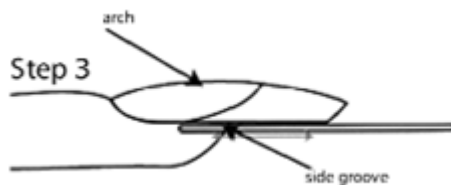
#### 1. Free Edge



#### 2. Left and Right Side Walls



#### 3. Left and Right Side Groove

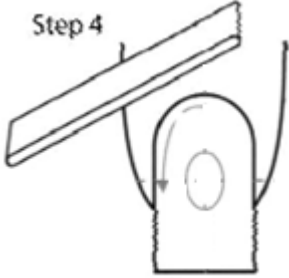




## File the Structure

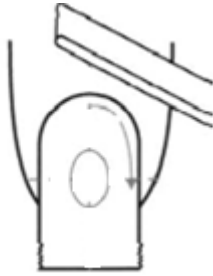
4. Left Cuticle and side

Step 4



5. Right Cuticle and side

Step 5



6. Left front edge

Step 6

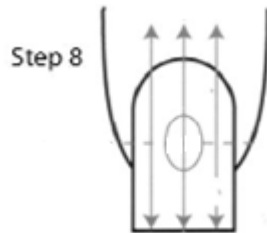


7. Right Cuticle and side

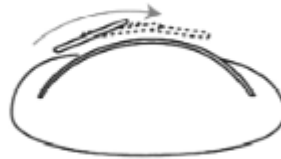
Step 7



8. Blend and Thin



Step 8 (barrel view)



## **FINISHING ROCK HARD NAILS**

### **With Clear:**

1. Finish nail with an even coat of **HEADLINER BRUSH-ON GEL** and cure for 30 seconds in your **ARTISTIC PRO30 LED LIGHT** or 2 minutes in a traditional 36watt UV lamp.
2. Remove inhibition layer with **NAIL SURFACE CLEANSER** using a lint free wipe.
3. Finish service by applying one drop of **REVIVE CUTICLE OIL** and massage into cuticle and surrounding skin.

### **With Colour Gloss:**

1. Apply a thin layer of the **ARTISTIC COLOUR GLOSS** of your choice, making sure to seal the edge.



2. Cure for 30 seconds in your **ARTISTIC PRO30 LED LIGHT** or 2 minutes in a traditional 36watt UV lamp. Repeat steps 1 and 2 until desired color is achieved.
3. Apply a coat of **COLOUR GLOSS SOAK OFF GLOSSING GEL**.
4. Cure for 30 seconds in your **ARTISTIC PRO30 LED LIGHT** or 2 minutes in a traditional 36watt UV lamp.
5. Remove inhibition layer with **NAIL SURFACE CLEANSER** using a lint free wipe.
6. Finish service by applying one drop of **REVIVE CUTICLE OIL** and massage into cuticle and surrounding skin.

***With a French Manicure using ROCK HARD Brush-On Gels:***

1. Use **GROUPIE OR PINK ROCKER BRUSH-ON GEL**, depending on your client's preference. Apply one coat to entire surface, careful not to get on skin
2. Cure for 30 seconds in your **ARTISTIC PRO30 LED LIGHT** or 2 minutes in a traditional 36watt UV lamp.
3. Apply a thin application of **ENCORE BRUSH-ON WHITE GEL** to the extension edge creating the desired smile line. Use an **ARTISTIC GEL BRUSH** to clean and sharpen the French line.
4. Cure for 5 seconds in your **ARTISTIC PRO30 LED LIGHT** or 30 seconds in a traditional 36watt UV lamp. Repeat steps 3 if needed.



5. Finish nail with an even coat of **HEADLINER BRUSH ON GEL** and cure for 30 seconds in your **ARTISTIC PRO30 LED LIGHT** or 2 minutes in a traditional 36watt UV lamp.
6. Remove inhibition layer with **NAIL SURFACE CLEANSER** using a lint free wipe.
7. Finish nail by applying one drop of **REVIVE CUTICLE OIL** and massage into cuticle and surrounding skin.

## **MAINTENANCE**

1. File the entire gel surface of the nails with the 180 grit **ASPECT FILE**. Lightly buff the exposed natural nail surface with the 100 side of the 100/180 grit **EFFECT BUFFER** to remove shine and blend existing **ROCK HARD NAIL** product into the natural nail. Remove dust with a nylon brush.
2. Scrub nail with **NAIL SURFACE CLEANSER**, using a lint free wipe, focusing on the cuticle area and lateral walls.
3. Apply **PH NAIL PREP** to the *natural nail* growth area. .
4. Lightly moisten exposed natural nail with **OPENING ACT** non-acid based primer. The nail will remain shiny after application.
5. Use **HEADLINER, GROUPIE, OR PINK ROCKER BRUSH-ON GEL**, depending on your client's preference. Apply one coat to entire surface and seal



- the edge. Cure for 30 seconds in your **ARTISTIC PRO30 LED LIGHT** or 2 minutes in a traditional 36watt UV lamp.
6. Use **HARDCORE BUILDING GEL IN CLEAR OR PINK** according to your client preference. With an **ARTISTIC #9 OVAL GEL BRUSH** get a small bead of product and place on the apex area. Lightly massage the product towards the cuticle and float the brush on top of the bead to fill and level exposed nail.
  7. Cure for 30 seconds in your **ARTISTIC PRO30 LED LIGHT** or 2 minutes in a traditional 36watt UV lamp.
  8. If the nail is flexible or un-level, repeat step 6 and 7.
  9. Use a lint free wipe soaked in **NAIL SURFACE CLEANSER** to clean the inhibition layer (sticky surface) from the nail.
  10. Refine the gel application using the **ROCK HARD NAILS FILING METHOD**, and finish the service with Headliner, Colour Gloss or as desired.