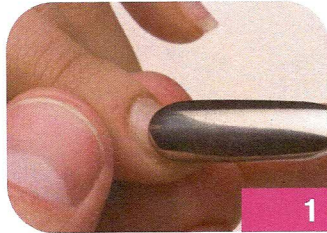


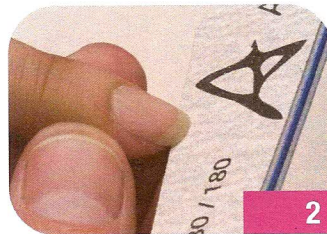
APPLY

COLOUR GLOSS  
SOAK OFF COLOR GEL

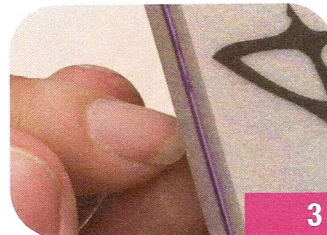
1. Sanitize both you and your clients hands. Push back cuticle and remove any loosened pieces from the nail plate, cuticle area and hang nails



2. Shape the natural nail free edge using your Artistic 180/180 Aspect File



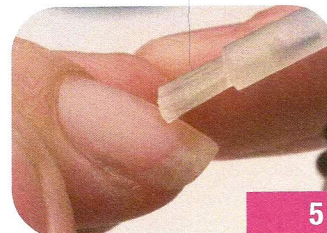
3. Gently remove shine from the natural nail using the 180 side of the Artistic 100/180 Effect buffer and remove dust



4. Scrub nails with Artistic Nail Surface Cleanser and a lint free wipe focusing on the cuticle area and lateral walls



5. Apply Colour Gloss pH Nail Prep to the nail plate



6. Apply Colour Gloss Soak Off Bonding Gel to the nail in a thin application and seal the edges

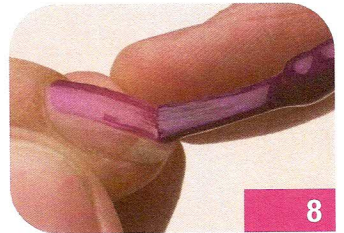


**Note: If using Artistic Soak Off Building Gel for added shape or strength apply now. Place hand in the Artistic LED light for 30 seconds or a traditional UV lamp for 2 minutes.**

7. Place hand in your Artistic LED light for 10 seconds or a traditional UV lamp for 1 minute



8. Apply Colour Gloss Soak Off Color Gel to the nail in a thin application making sure to seal the edges



9. Place hand in your Artistic LED light for 30 seconds or a traditional UV lamp for 2 minutes.

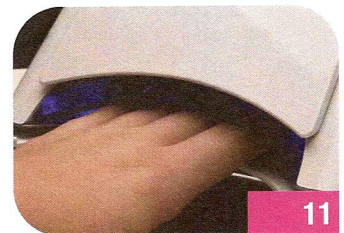
For darker coverage, repeat steps 8. and 9.



10. Apply Colour Gloss Soak Off Glossing Gel using a thin light application



11. Place hand in your Artistic LED light for 20 seconds or a traditional UV lamp for 1 minute



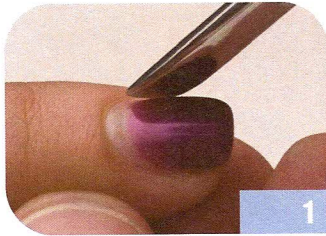
12. Remove sticky inhibition layer with Artistic Nail Surface Cleanser and a lint free wipe. Apply Revive Cutical Oil to surrounding skin to finish.



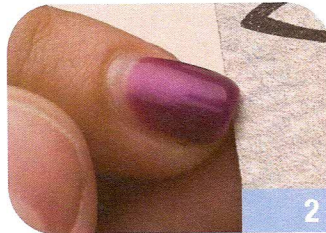


**MAINTAIN** **COLOUR GLOSS**  
SOAK OFF COLOR GEL

**1.** Sanitize both you and your clients hands. Push back cuticle and remove any loosened pieces from the nail plate, cuticle area and hang nails



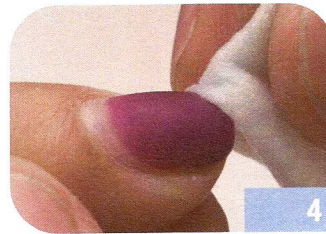
**2.** Shape the nails free edge using your Artistic 180/180 Aspect File



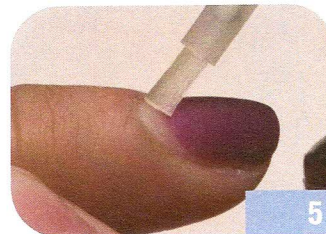
**3.** Remove shine from and blend existing Colour Gloss into the natural nail using 180 side of the Artistic 100/180 Effect buffer and remove dust



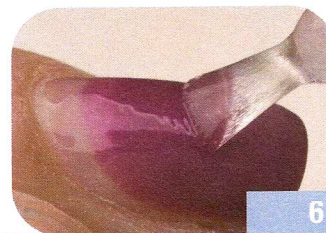
**4.** Scrub nails with Artistic Nail Surface Cleanser and a lint free wipe focusing on the cuticle area and lateral walls



**5.** Apply Colour Gloss pH Nail Prep to the nail plate

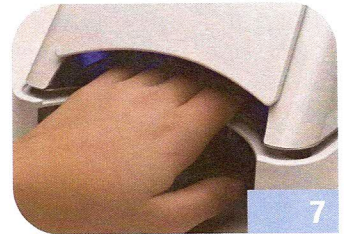


**6.** Apply Colour Gloss Soak Off Bonding Gel to the nail in a thin application and seal the edges

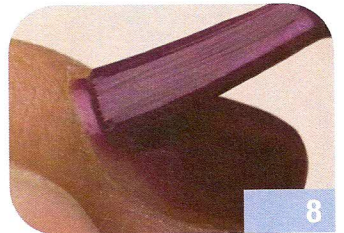


**Note: If using Artistic Soak Off Building Gel for added shape or strength apply now. Place hand in the Artistic LED light for 30 seconds or a traditional UV lamp for 2 minutes**

**7.** Place hand in your Artistic LED light for 10 seconds or a traditional UV lamp for 1 minute



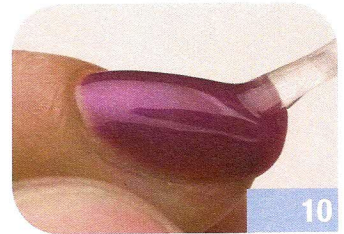
**8.** Apply Colour Gloss Soak Off Color Gel to the nail in a thin application making sure to seal the edges



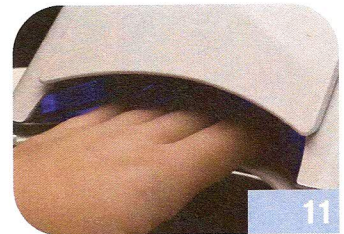
**9.** Place hand in your Artistic LED light for 30 seconds (20 seconds for light colors) or a traditional UV lamp for 2 minutes (1 minute for light colors). For darker coverage, repeat steps 8 and 9



**10.** Apply Colour Gloss Soak Off Glossing Gel using a thin light application



**11.** Place hand in your Artistic LED light for 20 seconds or a traditional UV lamp for 1 minute



**12.** Remove sticky inhibition layer with Artistic Nail Surface Cleanser and a lint free wipe. Apply Revive Cutical Oil to surrounding skin to finish.





REMOVE

COLOUR GLOSS  
SOAK OFF COLOR GEL

1. File the surface of existing Colour Gloss to break the seal and remove shine using your Artistic 100/180 Effect Buffer or Aspect 180 grit file.



2. Place cotton saturated with Artistic Nail Product Remover onto the nail



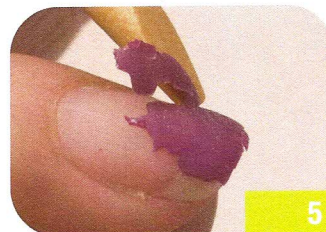
3. Wrap fingertip in foil and let set for 10 minutes



4. Remove foil with cotton by working back and forth -Gel should look cracked and wrinkled



5. Gently remove gel using an orange wood stick from cuticle to free edge



6. Lightly buff the surface of the nail using the 280 side of the Artistic 220/280 Perfect Buffer to finish. Apply Revive Cutical Oil to surrounding skin to finish.





APPLY

SMART GEL  
CLEAR SCULPTURE

1. Sanitize both your and your client's hands. Push back cuticle and remove any loosened pieces from the nail plate, cuticle area and hang nails



1

2. Shape the natural nail free edge using your ARTISTIC 240/240 Thin Wood File



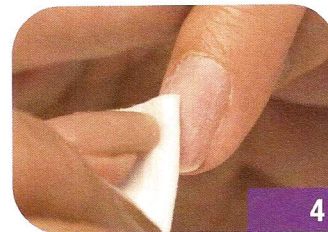
2

3. Gently remove shine from the natural nail using the 100 side of the ARTISTIC 100/180 Effect buffer and remove dust



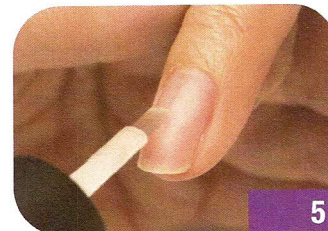
3

4. Scrub nails with ARTISTIC Nail Surface Cleanser and a lint free wipe focusing on the cuticle area and lateral



4

5. Apply Colour Gloss pH Nail Prep to the nail plate



5

6. Apply a thin coat of SECURE to the nail, sparingly



6

**Tech Tips: ARTISTIC recommended cure times are based on using an ARTISTIC Pro 30 LED Light or a 36 watt UV Light for curing. For best performance follow recommended cure times.**

7. APPLY FORMS

A. Roll form between fingers to prepare for proper fit to the clients nail  
B. Secure form and pinch tab at the tip for proper c-curve



7

8. CLEAR FORMING GEL - Apply a large bead from cuticle to desired length



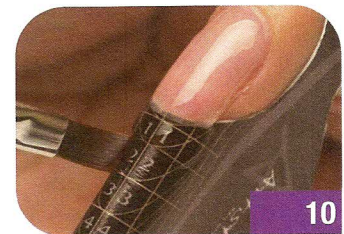
8

9. Distribute and shape surface of CLEAR FORMING GEL using a massaging motion



9

10. With a clean brush perfect free edge shape



10

11. Cure for 30 seconds in ARTISTIC Pro 30 LED Light or 2 minutes in UV Light



11

12. Remove sticky inhibition layer with ARTISTIC Nail Surface Cleanser and a lint free wipe



12

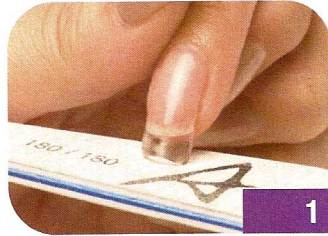


APPLY

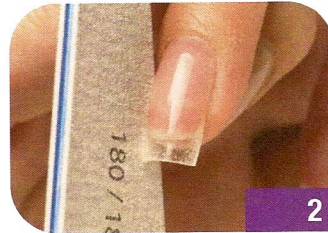
SMART GEL  
CLEAR SCULPTURE

(CONTINUED)

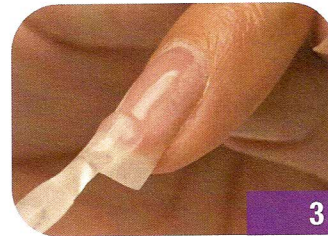
13. Finish file the nails using ARTISTIC 150/150 Correct File for the free edges



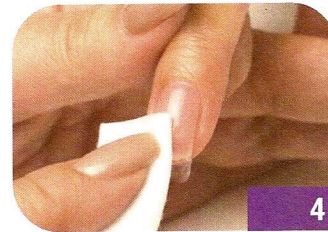
14. Use the ARTISTIC 180/180 Aspect File for the contour filing. DO NOT use a finish file any softer than a 180 grit file for cuticle and contour filing



15. BRUSH ON CLEAR - Remove dust and apply a thin layer from cuticle to free edge, covering entire nail surface. Cure for 30 seconds in ARTISTIC Pro 30 LED Light or 2 minutes in UV Light.



16. Remove sticky inhibition layer with ARTISTIC Nail Surface Cleanser and a lint free wipe. Apply Revive Cutical Oil to surrounding skin to finish.



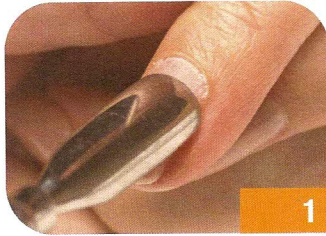


APPLY

SMART GEL

CLEAR with 5 SECOND FRENCH

1. Sanitize both your and your client's hands. Push back cuticle and remove any loosened pieces from the nail plate, cuticle area and hang nails



1

2. Shape the natural nail free edge using your ARTISTIC 240/240 Thin Wood File



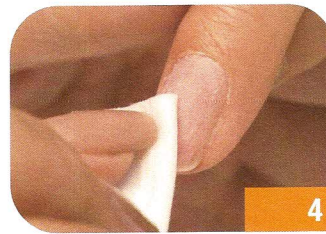
2

3. Gently remove shine from the natural nail using the 100 side of the ARTISTIC 100/180 Effect buffer and remove dust



3

4. Scrub nails with ARTISTIC Nail Surface Cleanser and a lint free wipe focusing on the cuticle area and lateral



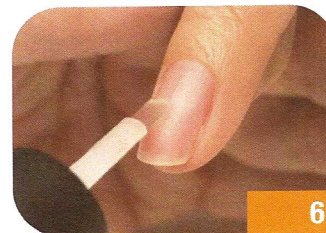
4

5. Apply Colour Gloss pH Nail Prep to the nail plate



5

6. Apply a thin coat of SECURE to the nail, sparingly



6

**Tech Tips: ARTISTIC recommended cure times are based on using an ARTISTIC Pro 30 LED Light or a 36 watt UV Light for curing. For best performance follow recommended cure times.**

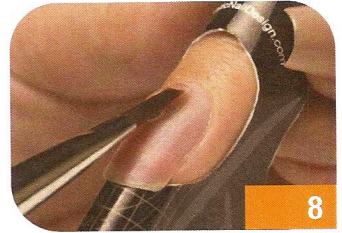
7. APPLY FORMS

A. Roll form between fingers to prepare for proper fit to the clients nail  
B. Secure form and pinch tab at the tip for proper c-curve



7

8. CLEAR FORMING GEL - Apply a large bead from cuticle to desired length



8

9. Distribute and shape surface of CLEAR FORMING GEL using a massaging motion



9

10. With a clean brush perfect free edge shape



10

11. Cure for 30 seconds in ARTISTIC Pro 30 LED Light or 2 minutes in UV Light



11

12. Remove sticky inhibition layer with ARTISTIC Nail Surface Cleanser and a lint free wipe

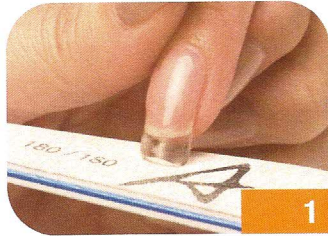


12



**APPLY SMART GEL**  
CLEAR with 5 SECOND FRENCH

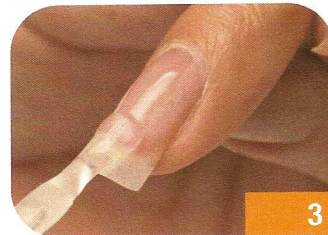
**13.** Finish file the nails using ARTISTIC 150/150 Correct File for the free edges



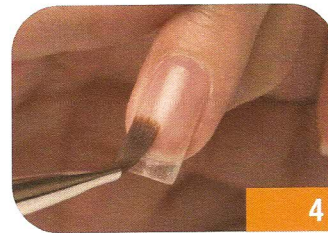
**14.** Use the ARTISTIC 180/180 Aspect File for the contour filing. DO NOT use a finish file any softer than a 180 grit file for cuticle and contour filing



**15.** BRUSH ON CLEAR - Remove dust and apply a thin layer from cuticle to free edge, covering entire nail surface. Cure for 30 seconds in ARTISTIC Pro 30 LED Light or 2 minutes in UV Light.



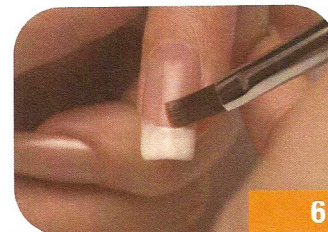
**16.** Using a clean dry brush wipe off sticky inhibition layer for a crisper smile line



**17.** PAINT ON WHITE - Apply a thin layer and cap free edge



**18.** Perfect smile line using a clean dry brush. Cure for 5 seconds in ARTISTIC LED Light or 1 minute in UV Light.



**(CONTINUED)**

**19.** PAINT ON WHITE - Apply a second coat following previously carved line. Cure for 5 seconds in ARTISTIC Pro 30 LED Light or 1 minute in UV Light.



**20.** BRUSH ON CLEAR - Apply a thin coat from cuticle to free edge, remember to cap the free edge. Cure for 30 seconds in ARTISTIC Pro 30 LED Light or 2 minutes in UV Light.



**21.** Remove sticky inhibition layer with ARTISTIC Nail Surface Cleanser and a lint free wipe. Apply Revive Cutical Oil to surrounding skin to finish.

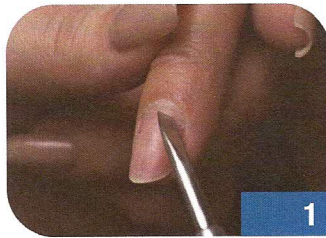




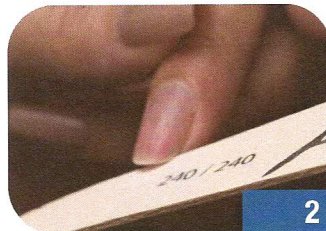
APPLY

SMART GEL  
PINK & WHITE SCULPTURE

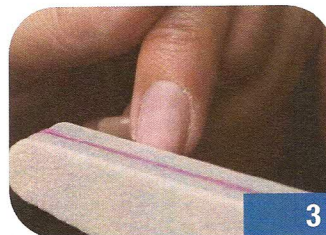
1. Sanitize both you and your clients hands. Push back cuticle and remove any loosened pieces from the nail plate, cuticle area and hang nails



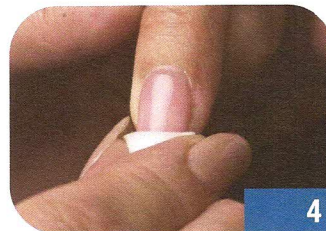
2. Shape the natural nail free edge using your ARTISTIC 240/240 Thin Wood File



3. Gently remove shine from the natural nail using the 100 side of the Artistic 100/180 Effect buffer and remove dust



4. Scrub nails with Artistic Nail Surface Cleanser and a lint free wipe focusing on the cuticle area and lateral



5. Apply Colour Gloss pH Nail Prep to the nail plate



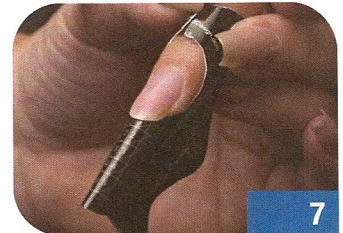
6. Apply a thin coat of SECURE to the nail, sparingly



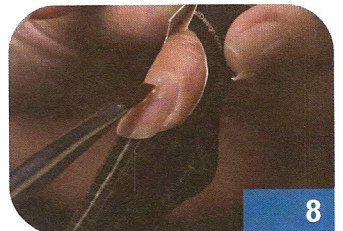
**Tech Tips: ARTISTIC recommended cure times are based on using an ARTISTIC Pro 30 LED Light or a 36 watt UV Light for curing. For best performance follow recommended cure times.**

7. APPLY FORMS

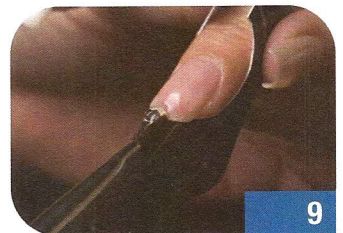
A. Roll form between fingers to prepare for proper fit to the clients nail  
B. Secure form and pinch tab at the tip for proper c-curve



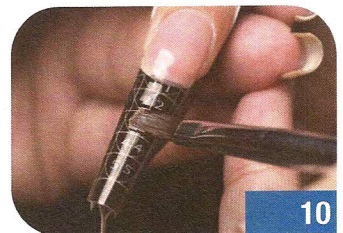
8. CLEAR FORMING GEL - Apply a large bead from cuticle to desired length



9. Distribute and shape surface of CLEAR FORMING GEL using a massaging motion



10. With a clean brush perfect free edge shape



11. Cure for 30 seconds in ARTISTIC Pro 30 LED Light or 2 minutes in UV Light



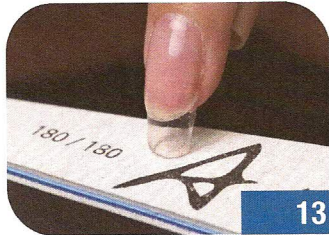
12. Remove sticky inhibition layer with ARTISTIC Nail Surface Cleanser and a lint free wipe



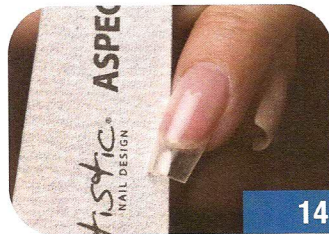


**APPLY** **SMART GEL**  
PINK & WHITE SCULPTURE

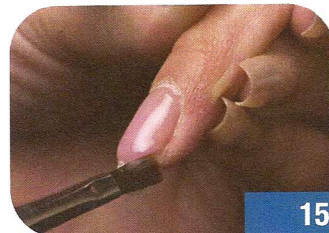
**13.** Finish file the nails using ARTISTIC 150/150 Correct File for the free edges



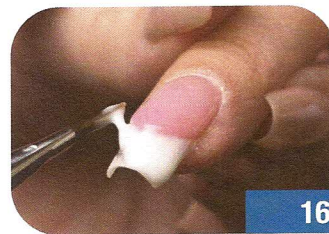
**14.** Use the ARTISTIC 180/180 Aspect File for the contour filing. DO NOT use a finish file any softer than a 180 grit file for cuticle and contour filing



**15.** Using an ARTISTIC Gel Brush apply a thin layer of ARTISTIC Pink Forming Gel in the nail bed area by pulling from cuticle to desired nail bed length. Once gel is in place draw a reverse smile line. Cure for 3 Seconds in ARTISTIC Pro 30 LED or 15-30 seconds in UV Light.



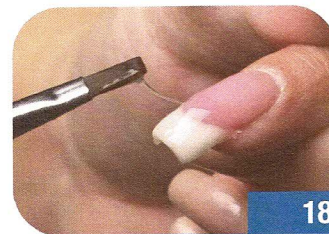
**16.** Apply a medium ball of ARTISTIC White Forming Gel using the ARTISTIC Gel Brush by placing the clean side of the brush onto the clear extension next to the natural nail and roll the gel off of brush while pulling towards the free edge. Wipe your Gel Brush clean and refine the smile line by starting in the center of the smile line and pull up toward the cuticle. Cure 10 seconds in LED or 2 minutes UV Lights.



**17.** Apply a thin layer of ARTISTIC Clear Forming Gel, like polish, to entire nail surface from cuticle to free edge

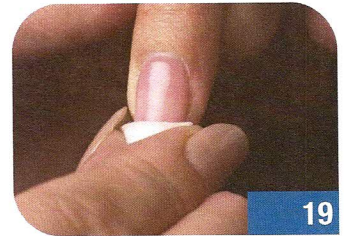


**18.** String ARTISTIC Clear Forming Gel where White & Pink gel meet and to create arch location. Cure 30 Seconds in ARTISTIC LED Light or 2 Minutes in UV Light.

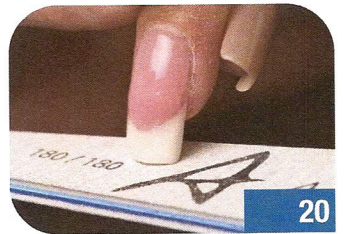


**(CONTINUED)**

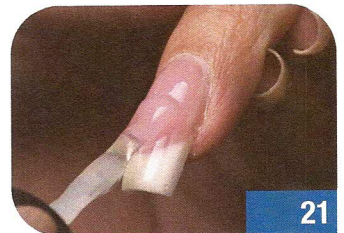
**19.** Remove sticky inhibition layer with ARTISTIC Nail Surface Cleanser and a lint free wipe. (NOTE: Use a new wipe for each hand. A wipe with excess gel on it can cause dulling.)



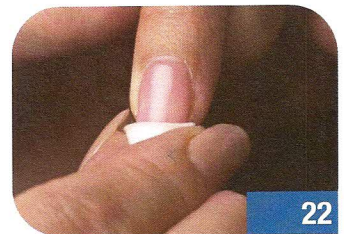
**20.** Finish file the nails using ARTISTIC 150/150 Correct File & 180/180 Aspect File. DO NOT use a finish file any softer than a 180 grit file for cuticle and contour filing.



**21.** Apply ARTISTIC Brush On Clear using a thin light application. Place hand in your ARTISTIC Pro 30 LED light for 30 seconds or a traditional UV lamp for 2 minutes.



**22.** Remove sticky inhibition layer with ARTISTIC Nail Surface Cleanser and a lint free wipe to finish.



**23.** Apply Revive Cutical Oil to surrounding skin to finish.

